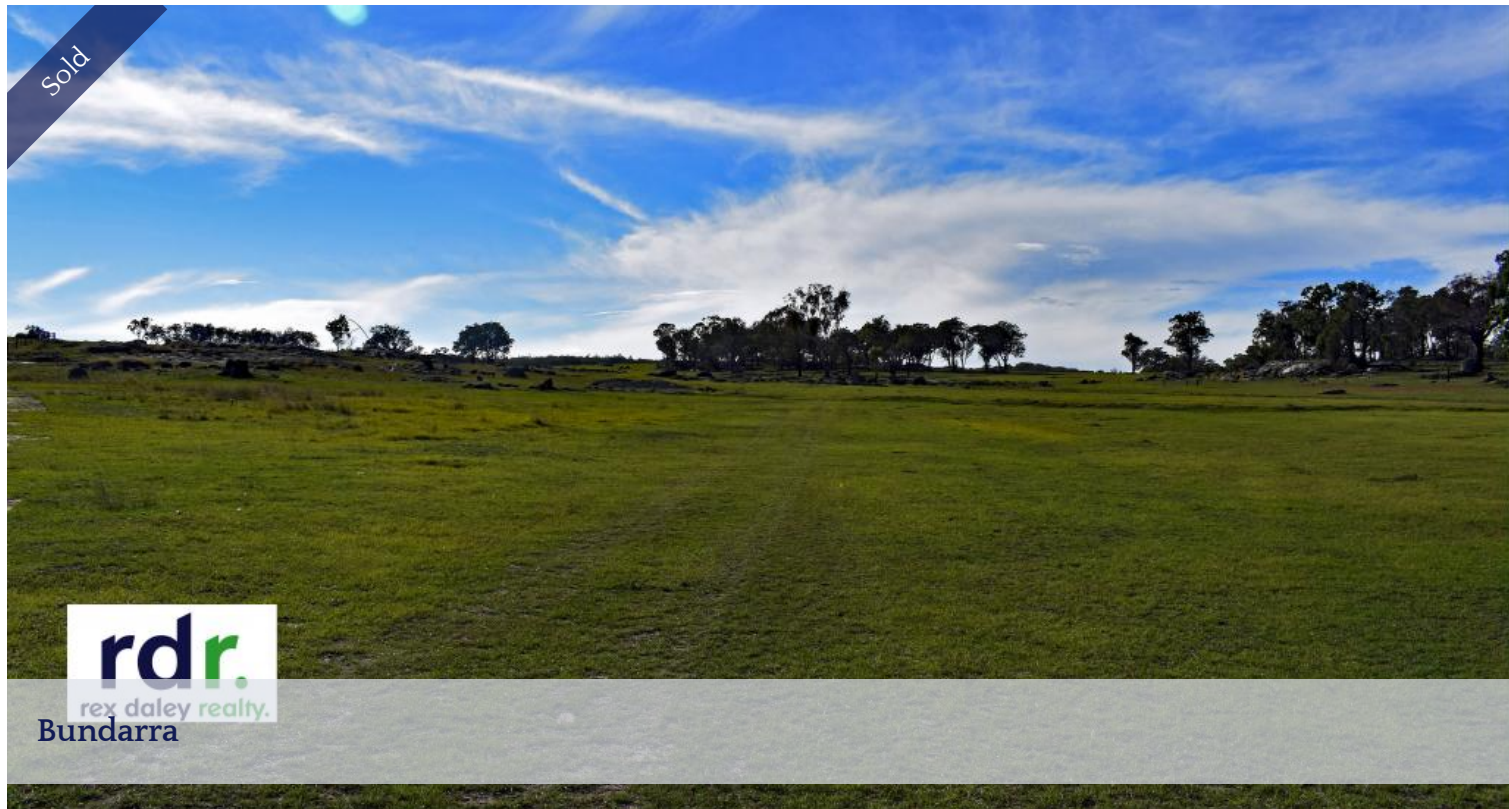


Sold



IMPRESSIVE 50 DAMS

AREA: 961.1284ha (2375 ac) Freehold.

Gywdir Shire Council Rates. North West LLS.

SITUATION: 20km west of Bundarra, 70km from Inverell, 130km from Tamworth.

SERVICES: Power. Phone. Mail 3 times per week. Primary and Secondary schools at Bundarra & Inverell. Air and rail services from Inverell to Brisbane & Armidale/Tamworth/Moree to Sydney. Saleyards at Inverell, Tamworth & Armidale, with Inverell being the 6th largest selling centre in the state, weekly fat cattle sales, fortnightly sheep sales and monthly store cattle sales. Export abattoir at Inverell. 3 major feedlots in the Inverell area. Inverell is one of the major shopping and service centres of Northern NSW.

COUNTRY: Undulating.

ALTITUDE: 600-900m ASL.

SOIL: Granite.

ARABLE AREA: 404.686ha (1,000ac).

PASTURE DEVELOPMENT: Pensacola pasture, Native grass.

TIMBER: Stringy bark, Yellow box, Red gum, Pine.

WATER: 50 dams.

RAINFALL: 812.8mm (32inch) p.a.

🛏 4 🏠 2 🚗 4

Price SOLD for \$1,890,000

Property Type Residential

Property ID 346

Agent Details

Wally Duff - 0427 546 146

Office Details

RDR Real Estate
24 Otho St Inverell, NSW, 2360
Australia
02 6722 5500

rdr.
real estate

FENCING: Boundary & subdivision: good to new netting.

IMPROVEMENTS: 4 bedroom, 2 bathroom home, with 2 wood heaters & newly renovated kitchen with gas stove. Camp draft arena, breaking-in yard & saddle room.

MACHINERY SHED: 4 bay machinery shed with lock-up workshop. Large chook run. 30 tonne cone-base silo. 15m x 6m hay shed.

WOOLSHED: 4 stand shearing shed with 3 equipped- all electric. Raised floor with wool press. 600 head under cover shearing shed.

STOCK YARDS: 200 head steel & timber cattle yard with Ellis crush. Timber sheep yard.

CARRYING CAPACITY: 220 cows comfortably. 2200 DSE.

The above information provided has been furnished to us by the vendor/s. We have not verified whether or not that information is accurate and do not have any belief in one way or the other in its accuracy. We do not accept any responsibility to any person for its accuracy and do no more than pass it on. All interested parties should make and rely upon their own inquiries in order to determine whether or not this information is in fact accurate.