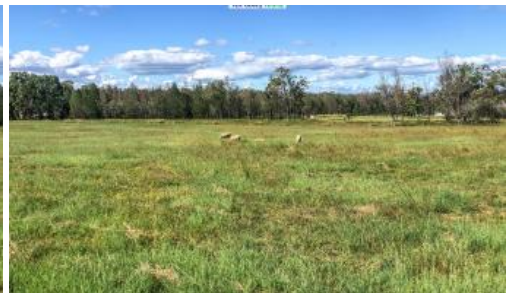


Sold



1031 Old Bundarra Road, Inverell



A TOUCH OF SERENITY

AREA: 13.354 ha (33 ac) Freehold.

Inverell Shire Council Rates: \$1,134.45p.a. Northern Tablelands LLS.

SITUATION: 2.5km from Gilgai, 13km from Inverell.

SERVICES: Single phase power. Phone service. Mail 5 times per week. School Bus at front gate. Primary and Secondary schools at Inverell. Air and rail services from Inverell to Brisbane & Sydney, Armidale/Tamworth/Moree to Sydney. Saleyards at Inverell, being the 6th largest selling centre in the state, weekly fat cattle sales, fortnightly sheep sales and monthly store cattle sales. Export abattoir at Inverell. 3 major feedlots in the Inverell area. Inverell is one of the major shopping and service centres of Northern NSW.

COUNTRY: Undulating. Altitude: Approx. 760m – 790m ASL.

SOIL: Red soil, Granite.

ARABLE AREA: 9 ha (22ac).

PASTURE DEVELOPMENT: Clover, some fertiliser.

TIMBER: Apple, Stringy bark, Cypress pine. Large timbered area for stock shelter or potted propagation.

WATER: Unequipped bore at 150ft deep with water at 70ft. 2 solidly-built dams. Coin-operated potable water hydrant located in Gilgai.

RAINFALL: 711mm (28inch) p.a.

📏 13.35 ha

Price SOLD for \$155,000

Property Type Residential

Property ID 557

Land Area 13.35 ha

Agent Details

Wally Duff - 0427 546 146

Office Details

RDR Real Estate
24 Otho St Inverell, NSW, 2360
Australia
02 6722 5500

rdr.
real estate

FENCING: Most in good to new condition. Subdivided into 3 paddocks.

STOCK YARDS: Timber cattle yards.

AGENTS REMARKS: Get that tree change you have been looking for! Rare size holding for this close to town. Blank canvas for permaculture project. Possibilities are only limited by your imagination.

The above information provided has been furnished to us by the vendor/s. We have not verified whether or not that information is accurate and do not have any belief in one way or the other in its accuracy. We do not accept any responsibility to any person for its accuracy and do no more than pass it on. All interested parties should make and rely upon their own inquiries in order to determine whether or not this information is in fact accurate.