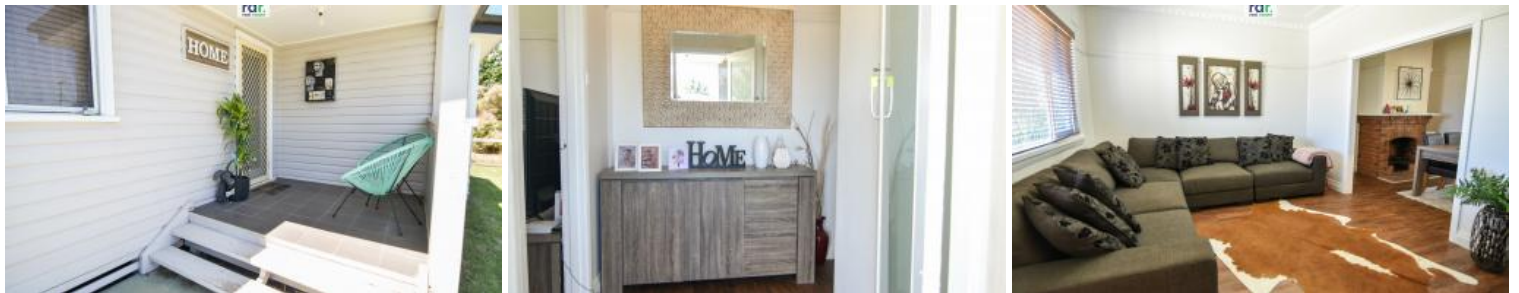


Sold



41 Chester Street, Inverell



UNDER CONTRACT

UNDER CONTRACT

You will be delighted by the convenience this charming weatherboard home offers.

Welcoming entry leads to the lounge room with reverse cycle air conditioning and high ceilings throughout.

Kitchen and dining area with ornamental brick fireplace, ample storage, electric appliances and ceiling fan.

3 bedrooms, all with built-in robes plus two bedrooms having reverse cycle air conditioning. A feature of bedroom 1 is the bay window. 4th bedroom, office or kids' playroom.

Family bathroom comprises of shower, vanity and toilet, with a second toilet located in the laundry.

Outside you will find an excellent covered entertaining and BBQ area and a fully fenced back yard with rear lane access. There's more than enough room for the kids and pets to all play happily together, a garden shed for the gardening tools, as well as a single lockable garage!

Drive-through, attached single carport gives you the convenience and ease of getting your boat or trailer into the back yard.

Set on a large 1012sqm block and situated near schools and parks, you will love the convenient location!

4 1 2 1,012 m2

Price	SOLD
Property Type	Residential
Property ID	777
Land Area	1,012 m2

Agent Details

Amanda Green - 0427 211 379

Office Details

RDR Real Estate
24 Otho St Inverell, NSW, 2360
Australia
02 6722 5500



Disclaimer: All information contained is gathered from relevant third party sources. We cannot guarantee or give any warranty about the information provided. Interested parties must rely solely on their own enquiries.

The above information provided has been furnished to us by the vendor/s. We have not verified whether or not that information is accurate and do not have any belief in one way or the other in its accuracy. We do not accept any responsibility to any person for its accuracy and do no more than pass it on. All interested parties should make and rely upon their own inquiries in order to determine whether or not this information is in fact accurate.